

# Banksia Bulletin

Banksia Road Primary School

65 Banksia Road, Greenacre NSW 2190

Tel 9707 3423 Fax 9790 5607 Email [banksiaroad-p.school@det.nsw.edu.au](mailto:banksiaroad-p.school@det.nsw.edu.au)

Caring, creative, challenging and achieving



Tuesday, 7 March 2023

## CALENDAR

### Week 7 Term 1 2023

March

Monday 6 <sup>th</sup>	Uniform Shop 8.45 -9.15am Parent & caregiver volunteer group-info session
Tuesday 7 <sup>th</sup>	Arts & English conversation
Thursday 9 <sup>th</sup>	Yr 3-6 assembly – 6N lead Playgroup in Hall 9.30-11.30
Friday 10 <sup>th</sup>	Uniform Shop 8.45 -9.15am PSSA Round 3

### Week 8 Term 1 2023

March

Monday 13 <sup>th</sup>	Uniform Shop 8.45 -9.15am Parent & caregiver volunteer group
Tuesday 14 <sup>th</sup>	SSW swimming carnival Arts & English conversation
Wednesday 15 <sup>th</sup>	NAPLAN starts
Thursday 16 <sup>th</sup>	Assembly K – 2 (2B lead) Playgroup in Hall 9.30-11.30 Year 6 boys visit PBHS
Friday 17 <sup>th</sup>	Uniform Shop 8.45 -9.15am No PSSA

### Week 9 Term 1 2023

March

Monday 20 <sup>th</sup>	Uniform Shop 8.45 -9.15am Three Way Goal Setting Interviews Parent & caregiver volunteer group
Tuesday 21 <sup>st</sup>	Goal setting Interviews Harmony Day Arts & English conversation
Thursday 23 <sup>rd</sup>	Assembly 3 – 6 (6H lead) Playgroup in Hall 9.30-11.30
Friday 24 <sup>th</sup>	Uniform Shop 8.45 -9.15am No PSSA

## Future Dates:

Wednesday 5<sup>th</sup> April – Easter Hat Parade

Thursday 6<sup>th</sup> April – ANZAC assembly

## 40% REDUCTION IN NEGATIVE BEHAVIOUR

### REFERRALS

This is comparison to the same time last year. Students have returned much more settled and are more equipped to solve social issues. Well done teachers and thank you parents. A great start to 2023.

### COMMUNICATION CHANNELS

Your child's [classroom teacher](#) is always the first and best person with whom to speak regarding your child's academic progress, social or behavioural concerns, class policy and procedures.

You are advised to speak with the [Assistant Principal](#) if the question relates to a specific issue that is outside the classroom, any questions regarding specific grade or department programs, academic progress, issues relating to discipline or concerns that have not been resolved by speaking with the classroom teacher.

Assistant Principal Early Stage 1  
Kindergarten: Mrs Denise Coluccio / Mrs Carolyn Hancock

Assistant Principal Stage 1  
Year 1 & 2: Miss Marnie Judd

Assistant Principal Stage 2  
Year 3 & 4: Miss Trish Colley

Assistant Principal Stage 3  
Year 5 & 6: Mrs Sana Imadi / Mrs Yasmin Khassouk

Please note: the classroom teacher and Assistant Principal must have been contacted prior to arranging a meeting with the Deputy Principal or Principal.

### MOBILE PHONES

Students are discouraged from bringing mobile phones to school. In the event that your child does bring a phone for after school communication, the following procedures are in place:

1. Upon arrival on site, the phone must be off and immediately signed into the office.
  2. At home time, phones must be signed out of the office and must remain switched off until students are off site.
- In the event that there is a breach of this policy, the phone will be held in the office and must be picked up from a parent.

### THREE WAY GOAL SETTING INTERVIEWS

On Monday 20<sup>th</sup> March we will conduct Three Way Goal Setting Interviews from 2:20pm till 6pm.

This will continue on Tuesday morning and afternoon. This is an opportunity for the parents, the teacher and the student to discuss learning progress and goals.

Follow the link below and enter the code:

nhsxt

<https://www.schoolinterviews.com.au/>

### HARMONY DAY/ NATIONAL ANTI BULLYING DAY

#### TUESDAY 21<sup>ST</sup> MARCH

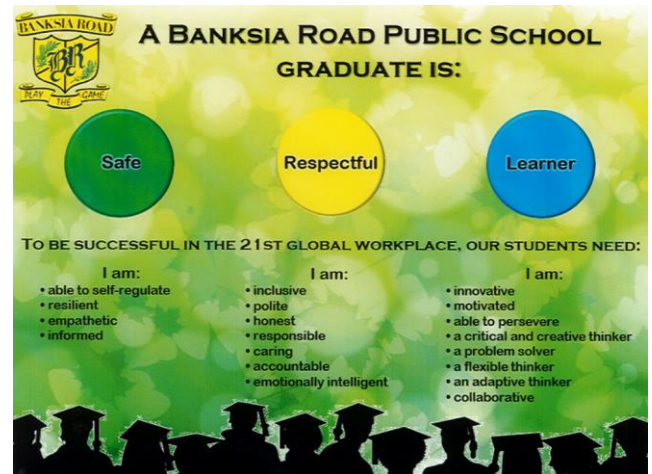
On Tuesday 21<sup>st</sup> March we will be celebrating Harmony Day at Banksia Road Primary School. We request that each child bring a plate of food to eat (not share) from their cultural cuisine. Students can wear their cultural costumes or orange clothes and closed in shoes (runners/sports shoes).



### PARENTS ARE WELCOME TO VISIT CLASSROOMS

FROM 10:45am – teachers will be talking through our Portrait of a Graduate and how this relates to Harmony.

From 11am till 11:55am parents will sit with their children and enjoy a picnic lunch.



### SSW SWIMMING CARNIVAL – 14<sup>TH</sup> MARCH

Muhammed E (1<sup>st</sup> at District 9 years freestyle) and Reem (3<sup>rd</sup> at District 11 years butterfly)

Both students will compete at the SSW Carnival.



## PBL

Our focus value is 'Respectful Communication' in the classroom and playground. Bringing this to the forefront allows students to create positive relationships, builds empathy and self-awareness. Positive and respectful communication results in student confidence - increasing student engagement.

## MEDICAL ACTION PLANS

It is important that Health Care Plans are updated annually and provided to the school. This applies to students whom require Medication, EpiPen and Ventolin as part of a health care plan. Please contact the office if required.

## EARLY LEAVERS

After 2pm, students are to remain on site and in their class until 3pm. Proof of a medical appointment is required for an early leaver slip to be issued during this time.

## PSSA – FRIDAY 10<sup>TH</sup> MARCH

The teams and venues are as follows:  
Basketball - Bankstown Basketball Stadium  
2 Third Ave, Condell Park

Boys and Girls Softball - Kinch Reserve  
Third Ave, Condell Park

Boys and Girls T/Ball - O'Neil Reserve  
Cooper Rd & Nobbs Rd, Yagoona

Boys Cricket - Jim Ring Reserve  
Woods Rd, Birrong

Girls Cricket - The Crest  
70 McLean Street, Georges Hall

Mixed Touch Football - Thurina Park  
Lowana Street, Villawood

Games start at 12pm and all parents are welcome to attend.

## SCHOOL BYTES

Banksia Road is using School Bytes software for parent portal, communication and school finance. Parents and carers are now able to see the fees in advance held at the school. Please send the correct money for excursions and incursions as change will not be returned to students. They will be allocated to fees in advance.

Mr Hamish Woudsma  
School Principal

## WHOLE SCHOOL PHOTOS

On Tuesday 28 February our Whole School Photos were taken.  
Photo packages will arrive at school in Term 2.

## SPECIAL RELIGIOUS EDUCATION

Special Religious Education will commence next Wednesday 15<sup>th</sup> March 2023.

Lessons will occur between 2:15 and 3:00pm

At this stage only the majority of Year 3-6 classes will be offered Islamic Scripture, due to shortages in SRE volunteers. We are grateful for all those who have signed up.

All other denominations will be offered K – Year 6.

## BEHAVIOUR CODE FOR STUDENTS

NSW public schools are committed to providing safe, supportive and responsive learning environments for everyone. We teach and model the behaviors we value in our students.

Promoting the learning, wellbeing and safety of all students in NSW Public Schools is a high priority for the Department of Education. We implement teaching and learning approaches to support the development of skills needed by students to meet our high standards for respectful, safe and engaged behaviour.

See refer to NSW DoE Behaviour Code attached.

Please contact the school office if you would like it translated to another language other than English or Arabic.

## DRAFT SCHOOL BEHAVIOUR SUPPORT AND MANAGEMENT PLAN

BRPS along with all schools in NSW are in the process of drafting a Behaviour Support and Management Plan. This draft plan will be shared with the community before the end of the term, for parent consultation.

BRPS is committed to explicitly teaching and modelling positive behaviour and to supporting all students to be engaged with their learning.

The plan will include

- Promoting and reinforcing positive student behaviour and school-wide expectations
- Behaviour Code for Students
- Whole School Approach
- Detention, reflection and restorative practices
- Partnership with parents/carers
- School Anti-bullying Plan



## NAPLAN PRACTICE

Last week and continuing this week, Students in Year 3 and Year 5 have been engaged in NAPLAN preparation. Students have engaged in numerous opportunities to learn and enhance their ability to navigate through their NAPLAN assessments.

NAPLAN will begin next week on Wednesday the 15<sup>th</sup> March. There will be a 10 day testing window, we encourage all children to attend on their set days, however, there will be catch up days if necessary. Writing can only be caught up during week 8. All students should ensure they've had a healthy breakfast and are at school on time ready to commence. Please see the end of the newsletter for additional information.

We encourage parents not to make a big deal about NAPLAN, all we ask is for students to do their best.

## GRIP LEADERSHIP CONFERENCE

On Wednesday 8<sup>th</sup> March our school student leaders will be attending a student conference along with Miss Bedran, our AP Student Wellbeing.

This conference is fully funded by the school and its purpose is to provide an opportunity for our students to thrive in their leadership journey.

**The GRIP Student Leadership Conference is unique in that it concentrates specifically on training student leaders for their role as SCHOOL LEADERS. The style, topics, and content of this conference all focus on what the students can do RIGHT NOW.**

Our goal is that our student leaders would leave the conference with a clear vision, a solid understanding and dozens of ideas for their time as a leader.

## EASTER RAFFLE AND DONATIONS

In the coming week you will receive a book of tickets from the P and C and we would encourage your support, if you are able, to fundraise for the Easter Raffle.

We are seeking donations of Easter eggs, games and crafts activities to form the prizes of our Easter Raffle. Every little bit helps.

Please deliver all donations to the school office or School Uniform Shop.

## SAVE THE DATE - EASTER HAT PARADE

On Wednesday April 5<sup>th</sup> we will be holding an Easter Hat Parade for students. We are looking forward to seeing all the wonderful creations.

*Mrs Janice Azzopardi*  
Deputy Principal

## COMMUNITY HUB NEWS

### Teacher's Aide Course

If you are interested in completing the teacher's aide course and haven't yet received information on this. Please contact Sheenagh Mackenzie-Smith for more information.

### Parent and Carer Volunteers

Thank you to those parents and caregivers who have been volunteering in the Community Hub each Monday morning. Your help is greatly appreciated, for any parents wanting to get involved, please join us on Monday morning after the bell.

For those parents and carers who have volunteered to assist in the classroom, helping children with their home readers, Mrs. Hancock will provide a demonstration with the books this coming Monday, 13<sup>th</sup> March. Please remember to submit your Working With Children's Check as soon as possible.

### Playgroup

Playgroup runs every Thursday morning from 9.30am to 11.30am in the school hall. Please remember to bring a drink of water and a healthy snack to enjoy during morning tea.



# SEGMENTING

A GUIDE TO SEGMENT WORDS









## WHY TEACHING SEGMENTING?

Segmenting words involves breaking down a word into each of its phonemes and graphemes. Phoneme is a term that just means a unit of sound, while graphemes are the groups of letters that are used to represent these sound.

Segmenting is a vital skill that your child will learn through phonics lessons at BRPS. By segmenting words into their different sounds, your child will be able to see how a word is sounded out and written down. This will help them develop their reading and writing skills in the long run.

## HOW TO SEGMENT WORDS

- 1 Say the sound aloud.  → 
- 2 Count the sounds, holding up one finger for each sound.   
- 3 Write a grapheme to represent each sound.
- 4 Write the number of sounds.

Word	Phonemes	Graphemes		
	3	sh	i	p

## Questions to ask your children



What did you learn today?

How did you do?

What did you do if you didn't understand?

How can you improve on your learning?

What are you most proud of?



## اخبار المدرسة مواعيد مهمة

ايام الاثنين و الجمعة يمكن شراء الزي المدرسي في الصباح الباكر

### الاسبوع ٧

الاثنين المعلومات للاهالي  
الثلاثاء المحادثات عن الفن و اللغة  
الخميس الاجتماع العام الصف ٦ ن  
برنامج اللعب من الساعة ٩،٣٠ الى ١١،٣٠ ص  
الجمعة مسابقات الرياضة بين المدارس

### الاسبوع ٨

الاثنين برنامج المتبرعين  
الثلاثاء مسابقة السباحة  
المحادثات عن الفن و اللغة  
الأربعاء بداية فحص اللغة و الرياضة  
الخميس الاجتماع العام الصف ٢ ب  
برنامج اللعب

### الاسبوع ٩

الاثنين بداية مقابلة تحديد اهداف الدراسة  
برنامج المتبرعين  
الخميس الاجتماع العام ٦ هـ

الثلاثاء ٢١ / ٣ يوم التوافق يفضل لبس الزي الشعبي او لون برتقالي و حذاء مغلق

### التليفون المحمول

التلاميذ يسلموا التليفون عند الوصول الي المدرسة مباشرة  
في مكتب الادارة و يستلموه عند الانصراف

### المحادثة الايجابية

نشجع التلاميذ على الكلام بطريقة مهذبة و باحترام لاي شخص

### معلومات الصحة

يفضل تجديد اي معلومات عن صحة اولادكم بادارة المدرسة

### دروس الديانة

تبدأ يوم الاربعاء ١٥ / ٣ من الساعة ١٥، ٢ الى ٣ م

### مجتمع الاهالي

نشكر الأهالي على الحضور.

إذا رغبتُم اي مزيد من المعلومات يمكن الاتصال بالسيدة شانيه

## **Behaviour code for students**

### **Information for parents/carers and students**

NSW public schools are committed to providing safe, supportive and responsive learning environments for everyone. We teach and model the behaviours we value in our students.

In NSW public schools students are expected to:

- Respect other students, their teachers and school staff and community members.
- Follow school and class rules and follow the directions of their teachers.
- Strive for the highest standards in learning.
- Respect all members of the school community and show courtesy to all students, teachers and community members.
- Resolve conflict respectfully, calmly and fairly.
- Comply with the school's uniform policy or dress code.
- Attend school every day (unless legally excused).
- Respect all property.
- Not be violent or bring weapons, illegal drugs, alcohol or tobacco into our schools.
- Not bully, harass, intimidate or discriminate against anyone in our schools.

Schools take strong action in response to behaviour that is detrimental to self or others or to the achievement of high quality teaching and learning.

### **Telephone interpreter service**

If you would like to discuss this document with the Principal and need assistance with English please call the telephone interpreter service on 131 450, tell them what language you need and ask the operator to phone the school. The operator will get an interpreter on the line to assist you with your conversation. You will not be charged for this service.



# Behaviour Code for Students: Actions

Promoting the learning, wellbeing and safety of all students in NSW Public Schools is a high priority for the Department of Education.

We implement teaching and learning approaches to support the development of skills needed by students to meet our high standards for respectful, safe and engaged behaviour.

## Respect

- Treat one another with dignity.
- Speak and behave courteously.
- Cooperate with others.
- Develop positive and respectful relationships and think about the effect on relationships before acting.
- Value the interests, ability and culture of others.
- Dress appropriately by complying with the school uniform or dress code.
- Take care with property.

## Safety

- Model and follow departmental, school and/or class codes of behaviour and conduct.
- Negotiate and resolve conflict with empathy.
- Take personal responsibility for behaviour and actions.
- Care for self and others.
- Avoid dangerous behaviour and encourage others to avoid dangerous behaviour.

## Engagement

- Attend school every day (unless legally excused).
- Arrive at school and class on time.
- Be prepared for every lesson.
- Actively participate in learning.
- Aspire and strive to achieve the highest standards of learning.

The principal and school staff, using their professional judgment, are best placed to maintain discipline and provide safe, supportive and responsive learning environments. The department provides a policy framework and resources such as Legal Issues Bulletins, access to specialist advice, and professional learning to guide principals and their staff in exercising their professional judgment. In this context the NSW Government and the Department of Education will back the authority and judgment of principals and school staff at the local level.



## القواعد السلوكية للتلاميذ

معلومات للأهل أو مقدّمي الرعاية وللتلاميذ

تحرص مدارس NSW الحكومية على توفير بيئة تعلّم آمنة وداعمة تلبي احتياجات الجميع. إننا نعلّم التلاميذ على ممارسة السلوكيات ذات الأهمية لدينا ونعمل كقدوة حسنة لهم.

- في مدارس NSW الحكومية يُتوقّع من التلاميذ ما يلي:
- احترام التلاميذ الآخرين ومدرّسيهم وموظفي المدرسة وأفراد مجتمع المدرسة.
  - اتباع قواعد المدرسة والصف وتعليمات مدرّسيهم.
  - بذل أقصى جهد لتحقيق أعلى مستوى دراسي.
  - احترام جميع أفراد مجتمع المدرسة وإظهار الاحترام والكرامة تجاه التلاميذ والمدرّسين وأفراد مجتمع المدرسة.
  - حل النزاعات باحترام وهدوء وعلى نحو ملائم.
  - التقيد بنظام الزي المدرسي أو قواعد اللباس الخاص بالمدرسة.
  - المواظبة على الدوام المدرسي كل يوم (إلا إذا كان هناك عذر قانوني).
  - احترام جميع الممتلكات.
  - عدم التصرف بعنف أو جلب أسلحة أو أدوات قتالية أو مخدرات ممنوعة أو كحول أو تبغ إلى مدرستنا.
  - عدم مشاكسة (ممارسة التنمر والبلطجة) أو مضايقة أو تخويف أي شخص أو التمييز ضد أي شخص في مدارسنا.

تتخذ المدارس إجراءات صارمة بحق أي شخص يتصرف بشكل مؤذ ومسيء للذات وللآخرين أو يعيق إنجاز مستوى تعليمي ودراسي رفيع.

### خدمة الترجمة الهاتفية

إذا شئت بحث مضمون هذه الوثيقة مع المدير وكنت تحتاج إلى مساعدة في اللغة الإنكليزية، فيرجى الاتصال بخدمة الترجمة الهاتفية على الرقم 131 450 وأخبرهم باللغة التي تريدها واطلب من موظف الخدمة الاتصال بالمدرسة نيابةً عنك. سوف يؤمّن لك الموظف مترجماً على الخط لمساعدتك في محادثتك؛ وهذه الخدمة مجانية.

## القواعد السلوكية للتلاميذ: التصرفات

يحتل تعزيز عملية التعلم وتأمين العافية والأمان لجميع تلاميذ مدارس NSW الحكومية المقام الأول لدى Department of Education.

ولإنجاز ذلك، نطبق مقاربتَي التعليم والتعلم دعماً لتنمية المهارات التي يحتاجها التلاميذ واستيفاء معاييرنا العالية للسلوك المتسم بالاحترام والأمان والمشاركة.

### الاحترام

- معاملة الفرد للآخر بكرامة.
- التكلم والتصرف بلطف وكياسة.
- التعاون مع الآخرين.
- بناء علاقات إيجابية وعلاقات احترام والتفكير بتأثير التصرفات على العلاقات قبل القيام بها.
- تقدير واحترام اهتمامات الآخرين وقدراتهم وثقافتهم.
- ارتداء ملابس لائقة والتقيّد بالزي المدرسي أو قواعد اللباس المدرسي.
- الحرص على الممتلكات.

### الأمان

- التقيد بقواعد السلوك والتصرف الخاصة بالدائرة و/أو المدرسة و/أو الصف والعمل كقدوة لهذه القواعد.
- التفاوض على حل النزاعات مع لحظ مشاعر الآخرين.
- تحمّل المسؤولية تجاه السلوك والأعمال الشخصية.
- الحرص على السلامة الذاتية وعلى سلامة الآخرين.
- الابتعاد عن ممارسة السلوك الخطر وتشجيع الآخرين على ذلك.

### المشاركة

- المواظبة على الدوام المدرسي كل يوم (إلا إذا كان هناك عذر قانوني).
- الوصول إلى المدرسة والصف في الوقت المحدد.
- الاستعداد والجهوزية لكل درس.
- المشاركة بإيجابية في عملية التعلم.
- التصميم على إنجاز أعلى معايير التعلم وبذل الجهد لتحقيق ذلك.

يستخدم المدير وموظفي المدرسة حكمهم المهني لضبط النظام وتوفير بيئة تعلم آمنة وداعمة تلبي الاحتياجات والمتطلبات. وتوفر الدائرة للمديرين وموظفيهم إطار عمل للنظام المطلوب منهم اتباعه وموارد، كالنشرات القانونية مثلاً، ومجالاً للحصول على نصائح من متخصصين، وإرشادات مهنية تساعد في إصدار أحكامهم كموظفين لدى الدائرة. ومن هذا المنطلق تساند حكومة NSW و Department of Education سلطة المديرين وموظفي المدرسة وأحكامهم على المستوى المحلي.

# NAPLAN

## Information for parents and carers

# 2023

### Why do students do NAPLAN?

NAPLAN is a national literacy and numeracy assessment that students in Years 3, 5, 7 and 9 sit each year. It is the only national assessment all Australian students have the opportunity to undertake.

As students progress through their school years, it's important to check how well they are learning the essential skills of reading, writing and numeracy.

NAPLAN assesses the literacy and numeracy skills that students are learning through the school curriculum and allows parents/carers to see how their child is progressing against national standards and over time.

NAPLAN is just one aspect of a school's assessment and reporting process. It doesn't replace ongoing assessments made by teachers about student performance, but it can provide teachers with additional information about students' educational progress.

NAPLAN also provides schools, education authorities and governments with information about how education programs are working and whether young Australians are achieving important educational outcomes in literacy and numeracy.

### Your child will do the NAPLAN tests online

Schools have transitioned from paper-based to computer-based assessments. All Year 3 students will continue to complete the writing assessment on paper.

Online NAPLAN tests provide more precise results and are more engaging for students. One of the main benefits is tailored (or adaptive) testing, where the test presents questions which may be more or less difficult depending on a student's responses.

Tailored testing allows a wider range of student abilities to be assessed and measures student achievement more precisely. A student's overall NAPLAN result is based on both the number and complexity of questions they answer correctly. Your child should not be concerned if they find questions challenging; they may be taking a more complex test pathway.

### What does NAPLAN assess?

NAPLAN assesses literacy and numeracy skills that students are learning through their regular school curriculum.

Students sit assessments in writing, reading, conventions of language (spelling, grammar and punctuation) and numeracy. The questions assess content linked to the Australian Curriculum: English and Mathematics.

All government and non-government education authorities contribute to the development of NAPLAN test materials.

To find out more about NAPLAN, visit [nap.edu.au](http://nap.edu.au).

### Participation in NAPLAN

NAPLAN is for everyone. ACARA supports inclusive testing so all students have the opportunity to participate in the national assessment program.

Adjustments are available for students with disability who have diverse functional abilities and needs.

Schools should work with parents/carers and students to identify, on a case-by-case basis, reasonable adjustments required for individual students with disability to access NAPLAN. Adjustments should reflect the support normally provided for classroom assessments.

To help inform these decisions, you may consult the [NAPLAN public demonstration site](#), the [Guide for schools to assist students with disability to access NAPLAN](#), or our [series of videos](#) where parents/carers, teachers and students share their experiences in using NAPLAN adjustments.

In exceptional circumstances, a student with a disability that severely limits their capacity to participate in the assessment, or a student who has recently arrived in Australia and has a non-English speaking background, may be granted a formal exemption.

Your school principal and your local test administration authority can give you more information on adjustments for students with disability or the process required to gain a formal exemption.



## What if my child is absent from school on NAPLAN days?

Where possible, schools may arrange for individual students who are absent at the time of testing to complete missed tests at another time during the school's test schedule.

## What if my school is closed on NAPLAN days?

Schools with compelling reasons may be given permission to schedule tests after the 9-day test window.

## What can I do to support my child?

Students are not expected to study for NAPLAN. You can support your child by reassuring them that NAPLAN is a part of their school program and reminding them to simply do their best. Some familiarisation and explanation of NAPLAN is useful to help students understand and be comfortable with the format of the tests. Teachers will ensure students are familiar with the types of questions in the tests and will provide appropriate support and guidance.

ACARA does not recommend excessive preparation for NAPLAN or the use of services by coaching providers.

See the types of questions and tools available in the online NAPLAN assessments at [nap.edu.au/online-assessment/public-demonstration-site](https://nap.edu.au/online-assessment/public-demonstration-site).

## NAPLAN timetable

The NAPLAN test window is 9 days. This is to accommodate schools that may have fewer devices.

The NAPLAN test window starts on Wednesday 15 March and finishes on Monday 27 March 2023. Schools are advised to schedule the tests as soon as possible within the testing window, prioritising the first week.

## How is my child's performance reported?

Individual student performance is shown on a national achievement scale for each assessment. This scale indicates whether the student is meeting expectations for the literacy and numeracy skills needed to participate fully in that year level.

A NAPLAN individual student report will be provided by your child's school later in the year. If you do not receive a report, you should contact your child's school.

## How are NAPLAN results used?

- Students and parents/carers may use individual results to discuss progress with teachers.
- Teachers use results to help identify students who need greater challenges or extra support.
- Schools use results to identify strengths and areas of need to improve teaching programs, and to set goals in literacy and numeracy.
- School systems use results to review the effectiveness of programs and support offered to schools.
- The community can see information about the performance of schools over time at [myschool.edu.au](https://myschool.edu.au).

## Where can I get more information?

For more information about NAPLAN:

- contact your child's school
- contact your local test administration authority at [nap.edu.au/TAA](https://nap.edu.au/TAA)
- visit [nap.edu.au](https://nap.edu.au)

To learn how ACARA handles personal information for NAPLAN, visit [nap.edu.au/naplan/privacy](https://nap.edu.au/naplan/privacy).

Test	Scheduling requirements	Duration	Test description
Writing	<ul style="list-style-type: none"><li>• Year 3 students do the writing test on paper (on day 1 only)</li><li>• Years 5, 7 and 9 writing must start on day 1 (schools must prioritise completion of writing across days 1 and 2 only, with day 2 only used where there are technical/logistical limitations)</li></ul>	Year 3: 40 min Year 5: 42 min Year 7: 42 min Year 9: 42 min	Students are provided with a 'writing stimulus' (sometimes called a 'prompt' – an idea or topic) and asked to write a response in a particular genre (narrative or persuasive writing)
Reading	<ul style="list-style-type: none"><li>• To be completed after the writing test</li><li>• To be completed before the conventions of language test</li></ul>	Year 3: 45 min Year 5: 50 min Year 7: 65 min Year 9: 65 min	Students read a range of informative, imaginative and persuasive texts and then answer related questions
Conventions of language	<ul style="list-style-type: none"><li>• To be completed after the reading test</li></ul>	Year 3: 45 min Year 5: 45 min Year 7: 45 min Year 9: 45 min	Assesses spelling, grammar and punctuation
Numeracy	<ul style="list-style-type: none"><li>• To be completed after the conventions of language test</li></ul>	Year 3: 45 min Year 5: 50 min Year 7: 65 min Year 9: 65 min	Assesses number and algebra, measurement and geometry, and statistics and probability



## East Bankstown FC - Season 2023



Are your kids looking for some fun, fitness and social connections, Registrations are Open for this season. Everyone is welcome!

Gosling Park – Hillcrest Ave, Greenacre. Registrations are online through <https://registration.dribl.com/club/615>

Looking for 5 year olds to 99 year olds. Girls and Boys.

We are also looking for girls to play in an all girls competition 6/7, 8 & 9 on Saturday.

Active Kids Vouchers accepted. Please reach out to the contacts below if interested!!

Registrar phone: 0419 608 538

Email: [eastsfc.gosling@hotmail.com](mailto:eastsfc.gosling@hotmail.com)

Webpage: [www.facebook.com/ebfckookas](https://www.facebook.com/ebfckookas)





# *Australian* **Air League**

NSW Group

## JOIN NOW

# NSW GROUP IS NOW ENROLLING



Since 1934 the Australian Air League has been teaching young boys and girls nationwide all about aviation, while helping them develop important life skills like leadership, discipline, self confidence and teamwork. When you join the league you will make new friends and take part in fun and exciting activities, on the ground and in the air.

Each week you will attend your local squadron where you will learn valuable skills and take part in fun and interesting activities and classes. Some of our classes include Meteorology, Navigation, Photography and Community Service. Squadrons also attend training camps, sport and recreational days, flying experiences and ceremonial drill.

We welcome boys and girls from the age of 8 years old from all different cultures and backgrounds. Parents and families are welcome to support or even join their local squadron as a volunteer. All adult members and volunteers are Working with Children Checked.

The Australian Air League is running both a fun and educational programme that is making fine citizens out of our young Australians.



**FOR MORE INFORMATION ON THE AUSTRALIAN AIR LEAGUE AND YOUR CLOSEST SQUADRON PLEASE CONTACT**

Email: [development.nsw@airleague.com.au](mailto:development.nsw@airleague.com.au)  
[www.airleague.com.au](http://www.airleague.com.au) Email: [info@airleague.com.au](mailto:info@airleague.com.au)  
Free Call: 1800 502 175

